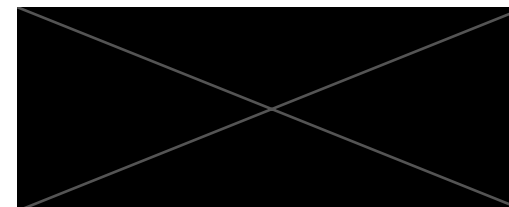
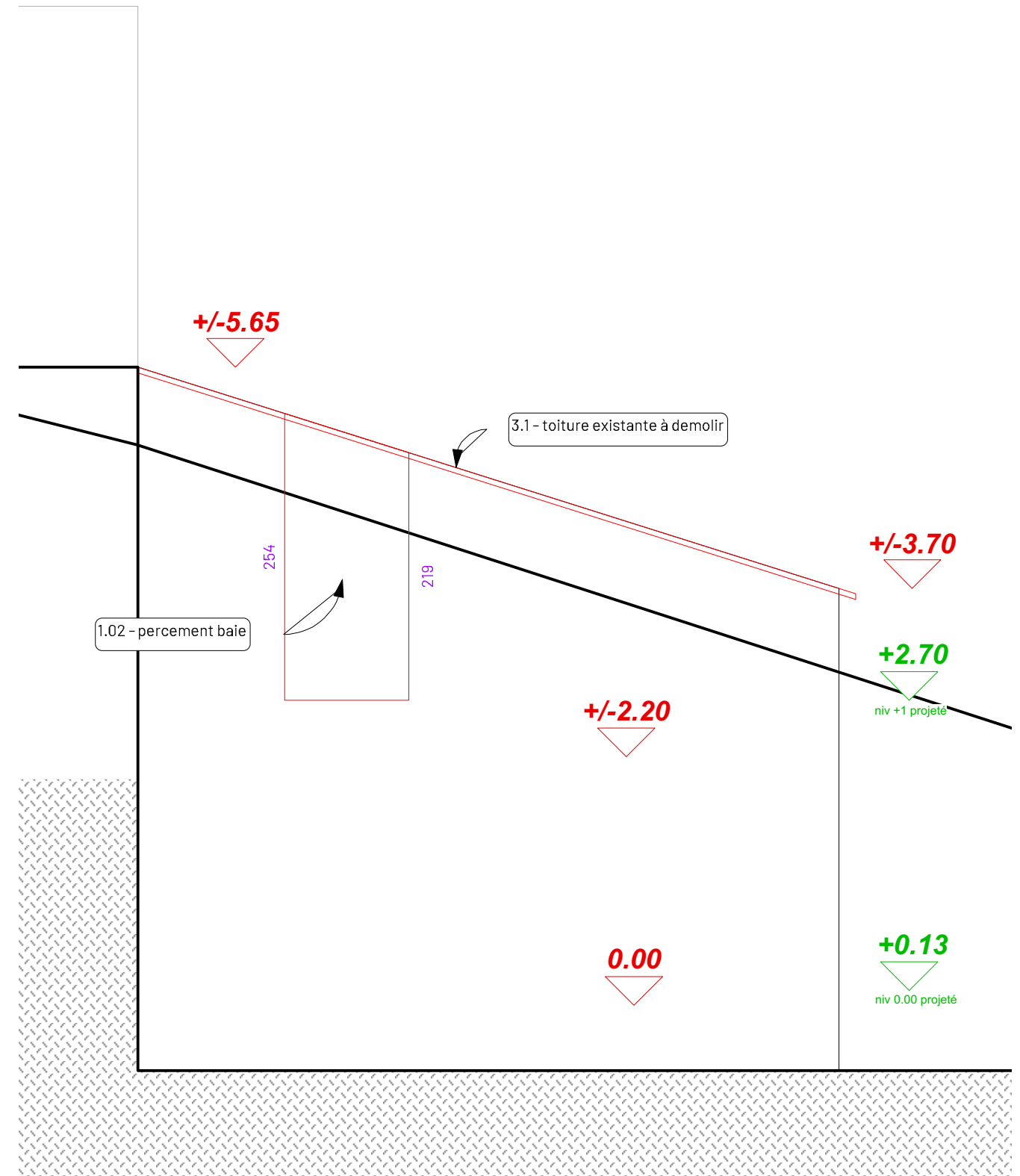
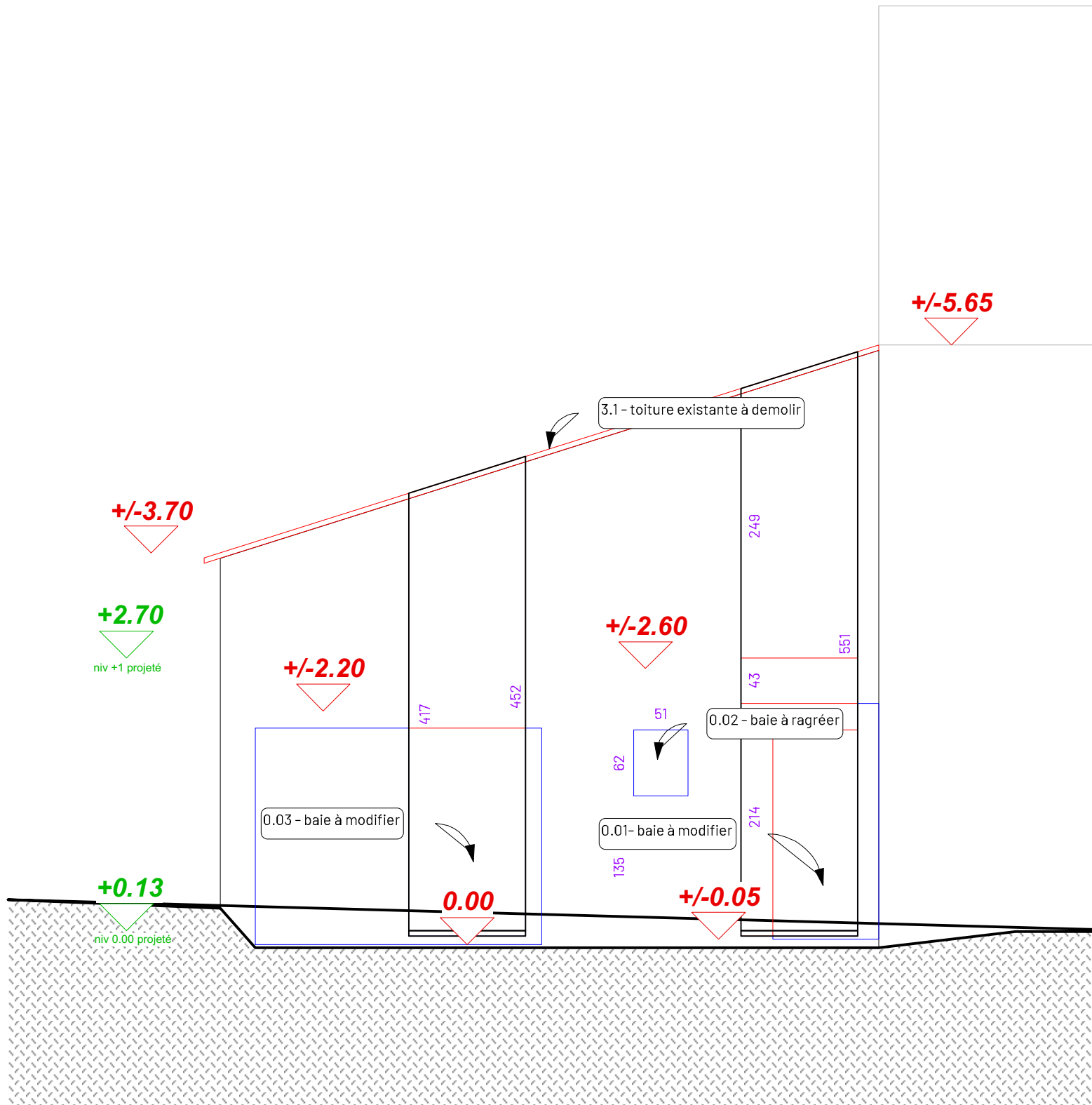


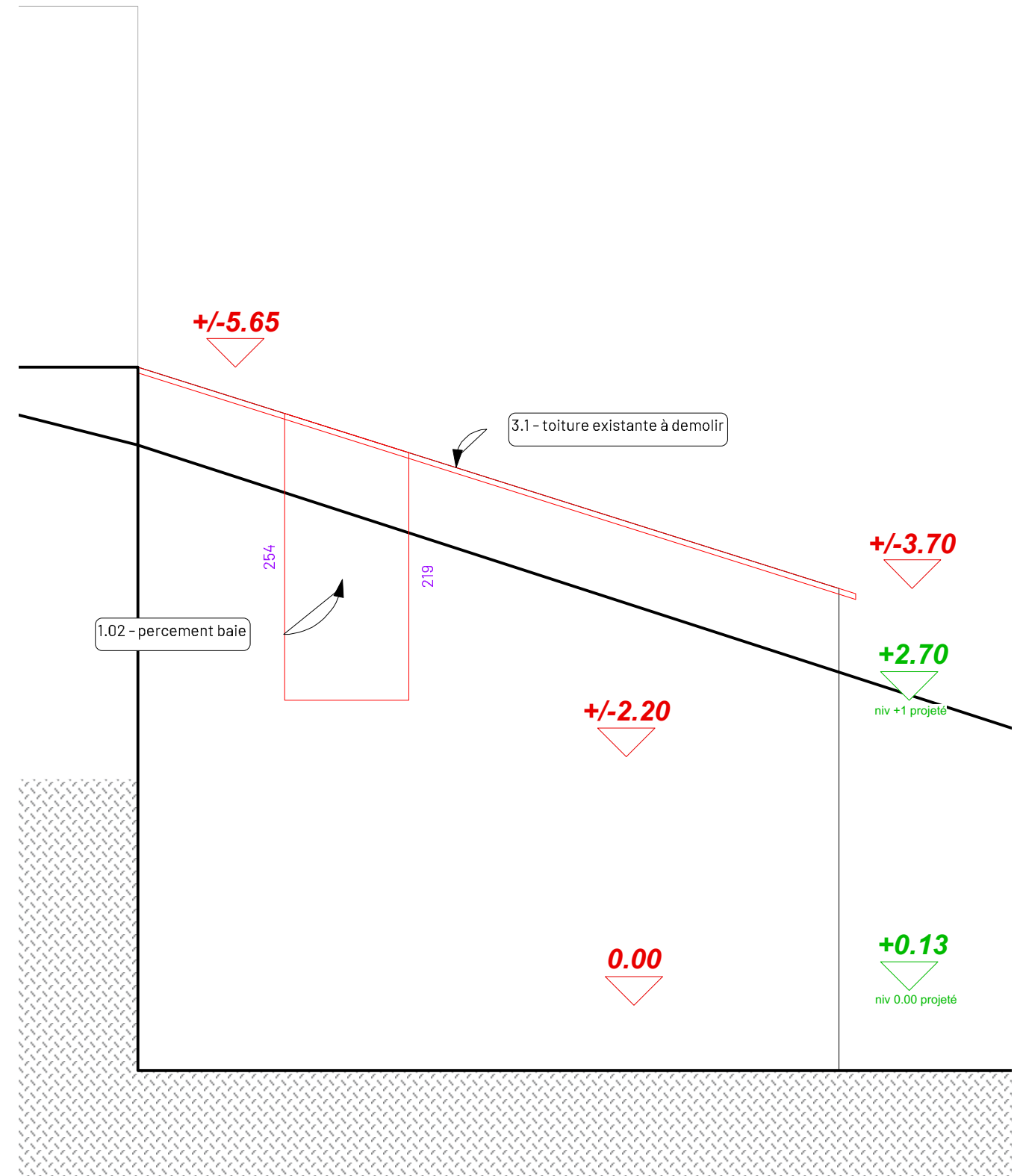
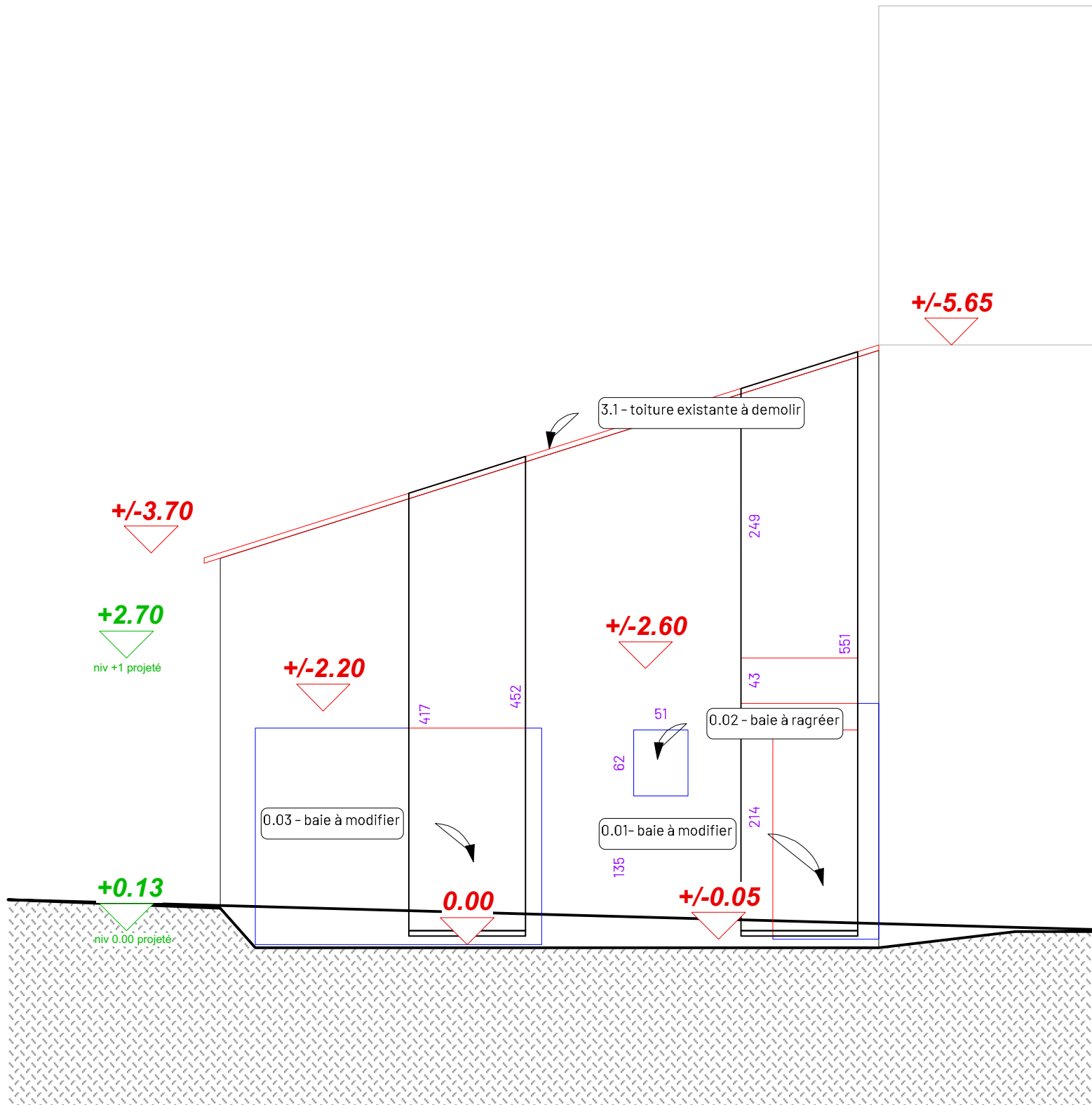
DEMOLITIONS - FACADE AVANT - 1/50e

DEMOLITIONS - FACADE ARRIERE - 1/50e



DEMOLITIONS - FACADE AVANT - 1/50e

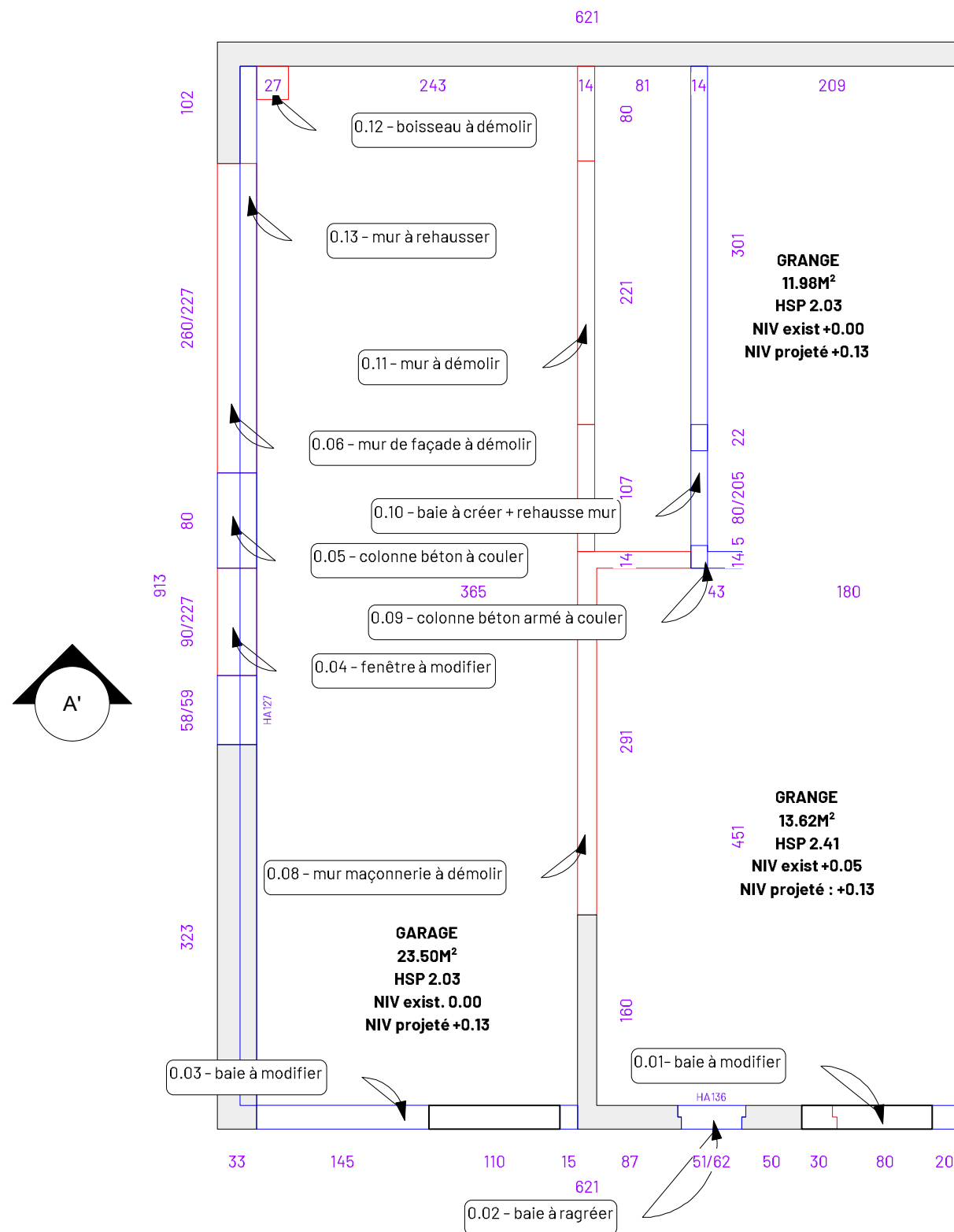
DEMOLITIONS - FACADE ARRIERE - 1/50e



DEMOLITIONS REZ - 1/50e

notes :

-attention, dimension linteau = niveau gros oeuvre intérieur.



DEMOLITIONS REZ +1 - 1/50e

